

TERRALIGHT GROUND MONITORING SYSTEM

Zones 1, 2, 21, 22

Full catalogue available on our website: www.inpratex.com

ATEX EARTHING SYSTEMS

ZONES 1, 2 (gas) & 21, 22 (dust)

The TERRALIGHT ground monitoring system is designed for use when filling or discharging potentially explosive materials. The system effectively eliminates any static charges. This system monitors the connection to the bonding conductor and the contact across the ground clamps. TERRALIGHT is designed for connecting one ground clamp or a cable revider fitted with ground clamp.



Option 1:
TERRA-L Ground Monitoring System
601KR/DW Cable Rewinder
70AG Earthing Clamp

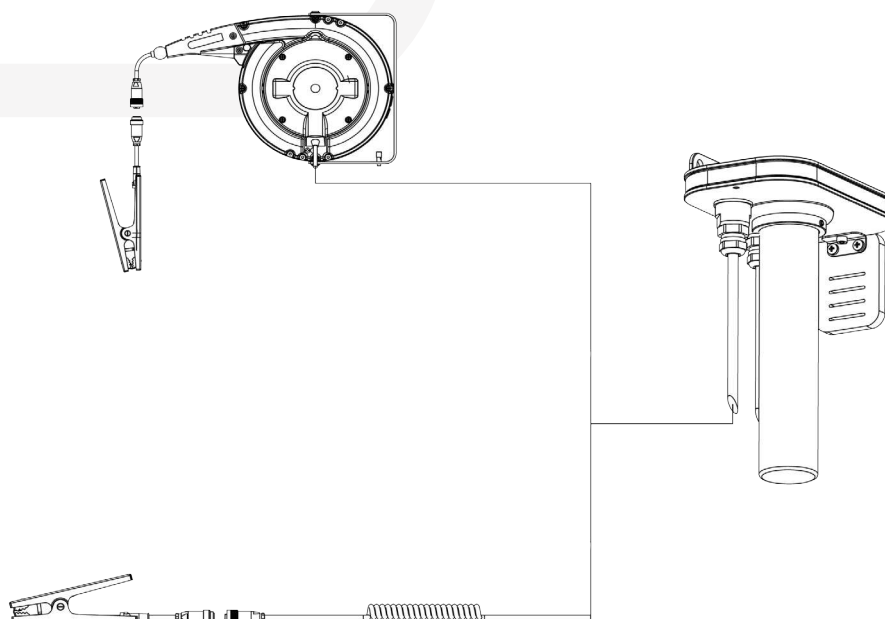


EU-Type Examination Certificate

Option 2:
TERRA-L Ground Monitoring System
5m Helix Cable KG/BSA, blue
70AG Earthing Clamp



ITEM REFERENCES OPTION 1		ITEM REFERENCES OPTION 2	
Designation:	Item No.:	Designation:	Item No.:
TERRA-L Ground Monitoring System	6D0801	TERRA-L Ground Monitoring System	6D0801
601KR/DW Cable Rewinder	6D0812	5m Helix Cable KG/BSA, blue	6D0813
70AG Earthing Clamp	6D0821	70AG Earthing Clamp	6D0821



4



CONTROL & CONNECTION EQUIPMENT

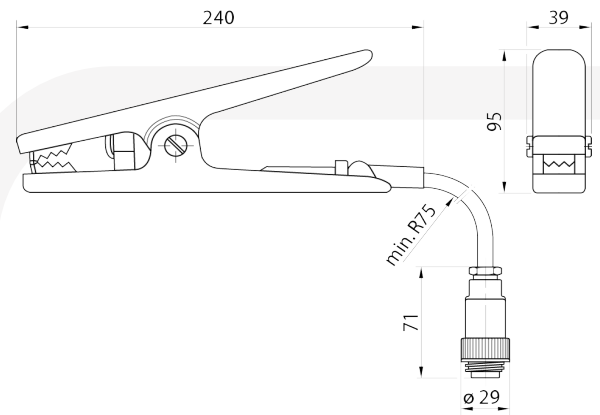
TERRALIGHT GROUND MONITORING SYSTEM

Zones 1, 2, 21, 22

Full catalogue available on our website: www.inpratex.com

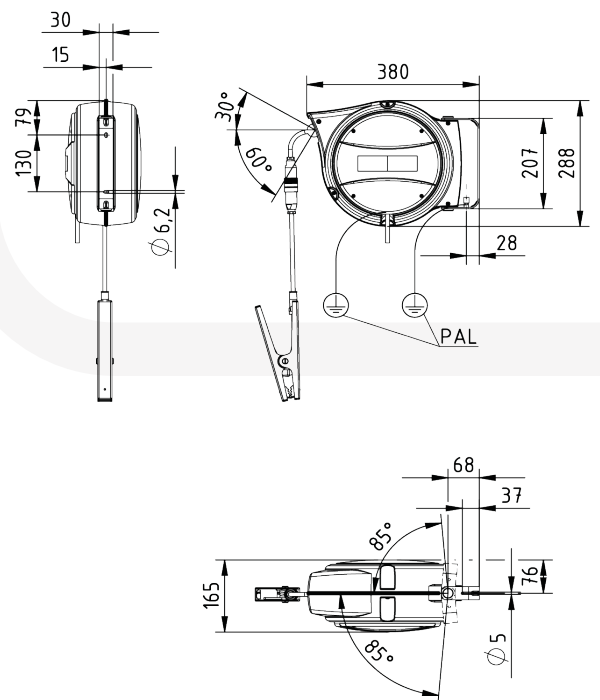
70AG CLAMP TECHNICAL SPECIFICATIONS

Marking:	II 2D Ex ia IIIC T135°C Db, II 2G Ex ia IIC T6 Gb
Certificate:	EU-Type Examination Certificate
Clamp material:	Stainless steel
Operating temperature:	-20°C to +70°C
Ground cable: (color: light blue)	Oil and gasoline resistant control lead, 3 x 1.5 mm ² Temperature range -40...+90°C Connected 4-pin plug IP67
Dimensions:	See figure
Weight:	Approx. 0.6 kg



The ATEX cable rewinders of series 601KR/DW ensure that the ground cable is safely reeled back after use, protecting it from damage and dirt. These cable rewinders are made of impact-proof aluminum and are mounted with an assembly bracket.

All cable rewinders are designed for wall mounting and may be used in zones with potentially explosive atmospheres in connection with the ground monitoring system.



601KR/DW CABLE REWINDER FOR ACTIVE GROUNDING TECHNICAL SPECIFICATIONS

Marking:	II 2G Ex ia IIC T6 Gb II 2D Ex ia IIIC T135°C Db
Certificate:	EU-Type Examination Certificate
Enclosure:	Aluminium with rolls and stopper
Rewind mechanism:	Automatic, Stopping device, On-Off function
Ingress protection:	IP42 according to EN 60529
Operating temperature:	-40°C to +70°C
Attachment:	Wall assembly via assembly bracket
Ground cable: (cable color: light blue)	12 m oil and gasoline resistant control lead, 3x1.5 mm ² Temperature range -40...+90°C Connected 4-pin socket IP67
Connecting lead:	2.5 m, connecting cable 3x1,5 mm ²
Dimensions:	See figure
Weight:	Approx. 5,7 kg with 12 m ground cable
Inductance:	Approx. 0.07 mH
Capacitance:	Approx. 1,6 nF

TERRALIGHT GROUND MONITORING SYSTEM

Zones 1, 2, 21, 22

Full catalogue available on our website: www.inpratex.com





The controlled grounding principle used in the TERRALIGHT Ground Monitoring System ensures that static charges developing in potentially explosive atmospheres, e.g. during loading, discharging or refilling are safely avoided.

This means that the risk of ignition caused by uncontrolled static discharges is eliminated at source. Because the ground connection is monitored, there is no need for low-resistance ground connections or large conductor cross-sections.

The advantages of the TERRALIGHT ground monitoring system are:

- easy and fast assembly and installation
- power supply via batteries, no external power supply necessary
- Configuration of the LED display (flashing, frequency) to the application to optimize the battery life

TERRA-L TECHNICAL SPECIFICATIONS	
Marking:	 II 1G Ex ia IIC T4 Ga  II 1D Ex ia IIIC T135°C Da
Certificate:	EU-Type Examination Certificate
Supply voltage:	Supply via 3 x 1.5 V D cells. Yellow LEDs indicate a low battery voltage
Operating temperature:	-18°C to +50°C
Storage temperature:	-40°C to +80°C (without battery)
Ambient humidity:	Max. 80% r.h., non-dewing
Enclosure material:	Stainless steel with wall bracket
Ingress protection:	IP65 according to EN 60529
Dimensions:	240.5 x 155 x 108 mm
Weight:	1.75 kg
Measurement circuit:	Intrinsically safe according to EN 60079-11 Maximum voltage U_0 : 6.0 V DC Maximum current I_0 : 0.25 A Maximum output P_0 : 0.36 W Maximum permissible connected load capacity / inductance: C_0 : 1,49 μ F, L_0 : 630 μ H
Operating points:	ON <20 kOhm OFF >50 kOhm / \pm 20%
Permissible types of battery :	D cells - Duracell Plus Power MN 1300 ENERGIZER MAX LR20 ENERGIZER LR20 ALKALINE POWER

