

# ISEO II GROUNDING CLAMPS

Zones 1, 2, 21, 22

Full catalogue available on our website: [www.inpratex.com](http://www.inpratex.com)

## ATEX GROUNDING CLAMPS

ZONES 1, 2 (gas) & 21, 22 (dust)

ATEX certified grounding clamp specially designed for use in hazardous areas. Iseo II pliers are the ideal tool for tanker loading platform equipped with electronic devices to signal correct grounding.



EU-Type Examination Certificate



The electrical continuity is ensured by the carbonitrided steel contact tips which make a firm connection to any foothold having a thickness between 3 and 20 mm.

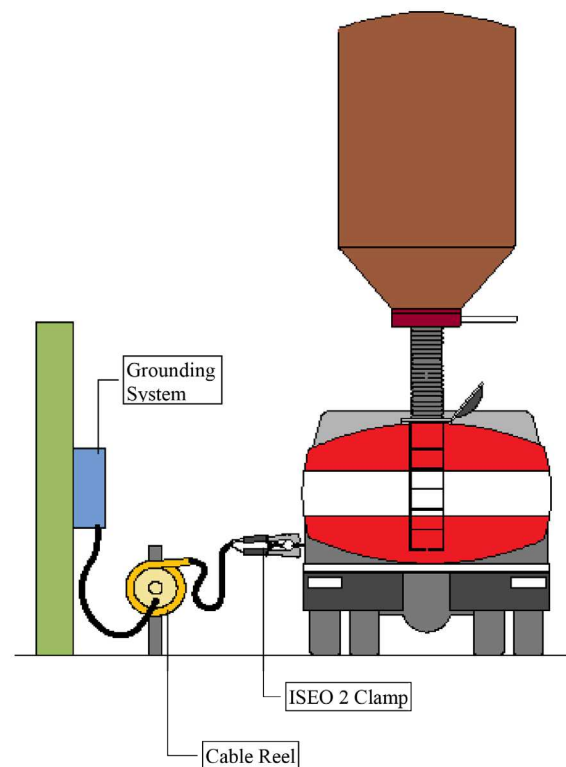
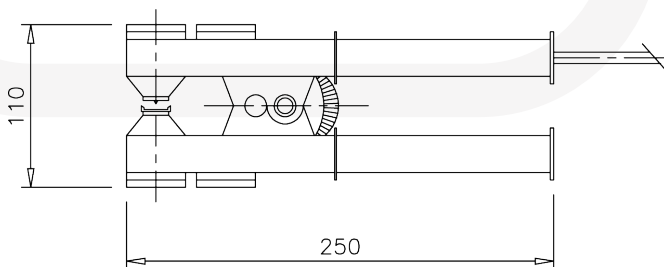
Equipped with tearingproof junction between the cable of the user and the one of the clamp.

### ITEM REFERENCES

Designation:	Insulation voltage:	Gripping capacity:	Current (A):	Cable section:	Cable lenght:	Item No.:
ISEO II	3000 V	3mm ~ 20mm	I max = 10A	3 x 3 mm <sup>2</sup>	11 m	6D0502

### TECHNICAL SPECIFICATIONS

Marking:	II 2G Ex d IIC T6 II 2D Ex tb IIIC T85°C Db
Certificate:	EU-Type Examination Certificate
Material:	Aluminium
Contact tips:	Carbonitrided steel
Ingress protection:	IP65
Weight:	0,700 kg
Operating temperature:	-20°C to +55°C



### NOTES

Check daily the sliding of the crimping rod within the body of the clamp. Keep the coupling clean and lubricated with silicone spray. This is necessary to ensure grounding while making sure that any disruptive discharges occur in the inner chamber, purposely isolated, and not in the external environment.

For correct operation of the clamp it is recommended a monthly check of the crimping plugs, subject to wear; this ensures a perfect contact with the terminal which are linked to. Check the integrity of the electrical cable to the ground terminal in the vicinity of the clamp itself; verify the electrical continuity (at least once a month).

For use in potentially explosive atmospheres caused by dusts the user must provide a regular cleaning to limit the formation of layers of dust.

