

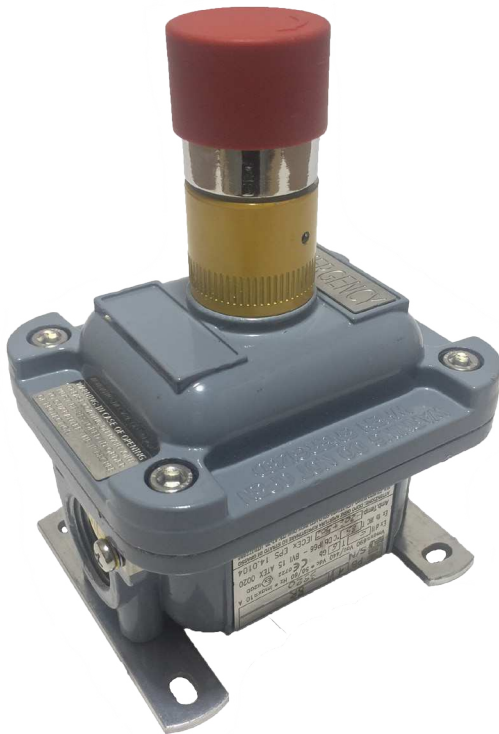
# EX-D EMERGENCY STOP

Zones 1, 2, 21, 22

Full catalogue available on our website: [www.inpratex.com](http://www.inpratex.com)

**ATEX CONTROL STATIONS**

**ZONES 1, 2 (gas) & 21, 22 (dust)**



Explosion-proof emergency mushroom for use in hazardous areas. Ex d enclosure equipped with a rotary release mushroom-type button.

External screws in stainless steel.



**ITEM REFERENCES**

Designation:	Item No.:
Ex d PB1 Emergency Stop (2NC)	3K0101

**TECHNICAL SPECIFICATIONS**

Marking:	II 2G Ex d IIC T6 Gb II 2D Ex tb IIIC T85°C Db
Certificate:	EU-Type Examination Certificate
Operating temperature:	-20°C to +40°C
Ingress protection:	IP66
Material:	Aluminium RAL 7000
Nominal current:	10 A
Nominal isolation voltage:	660 V
Nominal pulse voltage:	Uimp=6 kV
Short circuit protection Ue<500 VAC:	10 A
Terminals:	According to IEC/EN 60947-1
Max. wires section:	2x2,5 mm <sup>2</sup>
Working cycles:	1800 operations/hr (max)
Dimensions:	106 x 86 x 87 mm
Weight:	480 g approx.
Cable entries:	2x3/4" NPT (cable glands/plugs not included)